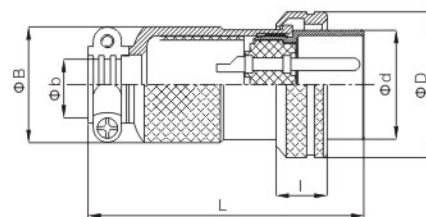
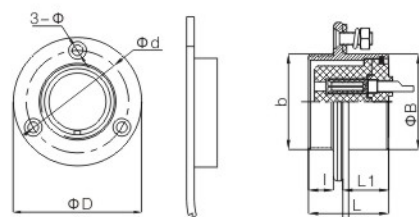




反装插座 Opposite socket

反装插头 Opposite plug



DF	25	30
ΦD	42	46
Φd	33	38
Φ	3.5	3.5
L	21	23
I	6.6	6.6
L1	10.3	12.3
ΦB	25	30
b	M25 × 1.25	M29 × 1

DF	25	30
ΦD	27.6	33.8
Φd	21	25
L	53	56
I	8	9.8
ΦB	22.4	25.8
Φb	10	12

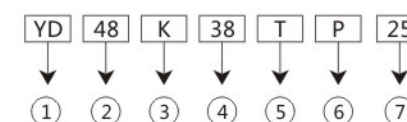
DF25F	4	5	6	7
公端绝缘体正面图 Male contact face view				
额定电流/电压 Rated current/voltage	10A/250V	10A/250V	7A/150V	7A/150V
工作电压(AC.V)分钟 Operation limit voltage(AC.V.rms)	400	400	250	250
耐电压(AC.V)分钟 Withstanding voltage(AC.V.rms)1 minute	2000	2000	1500	1500
绝缘阻抗(m Ω)DC500V Insulation resistance(m Ω MIN.)at DC 500V	2000	2000	2000	2000
接触阻抗(m Ω)DC1A Contact resistance(m Ω MAX.)AT DC 1A	1	1	1	1
接触体直径Φ (mm) Contact diameter	Φ 2.5	Φ 2.5	Φ 2.0	Φ 2.0

DF30F	4	5	6	7	8
公端绝缘体正面图 Male contact face view					
额定电流/电压 Rated current/voltage	20A/300V	15A/250V	10A/150V	10A/150V	7A/150V
工作电压(AC.V)分钟 Operation limit voltage(AC.V.rms)	500	400	250	250	200
耐电压(AC.V)分钟 Withstanding voltage(AC.V.rms)1 minute	2000	1500	1500	1500	1500
绝缘阻抗(m Ω)DC500V Insulation resistance(m Ω MIN.)at DC 500V	2000	2000	2000	2000	2000
接触阻抗(m Ω)DC1A Contact resistance(m Ω MAX.)AT DC 1A	1	1	1	1	1
接触体直径Φ (mm) Contact diameter	Φ 3.5	Φ 3.5	Φ 2.5	Φ 2.5	Φ 2.0



## 型号说明 Model Description



- ① 主称代号 Lord said the code
- ② 插座与面板配合直径 Socket and panel with diameter: 20、28、32、40、48
- ③ 接触件种类 Types of contacts: J-插针 pin; K-插孔 jack
- ④ 芯数 Core: 3, 4, 5, 7, 9, 10, 13, 19, 26, 27, 31, 38, 42, 53
- ⑤ 连接器类型 Connector Type: T-插头 plug; Z-插座 socket
- ⑥ 外壳结构形式 Shell structure: 直式 Straight:
  - P-固定金属软管 fixed metal hoses; Q-固定圆形电缆 fixed round cable 弯式 Curved type:
  - R-固定金属软管 fixed metal hoses; S-固定圆形电缆 fixed round cable
- ⑦ 金属软管内径或电缆外径 Metal hose inside diameter or outside diameter of cable

## 技术参数 Technical Parameter

环境温度: -45~+85°C Ambient temperature: -45~+85°C  
 相对湿度: 温度为+40°C时, 达93% Relative temperature: if the temperature is 40°C it can reaches 93°C  
 耐压: 2000V(交流有效值) Withstanding voltage: 2000V (AC RMS)  
 绝缘电阻: 大于2000MΩ Insulation resistance: greater than 2000MΩ

额定电流和接触电阻: Rated current and contact resistance

接触对直径mm Diameter of pair connector	1.5	2.5	3.5	5.5	10
额定电流A Rated current	10	2.5	50	100	200
接触电阻Ω contact resistance	0.0025	0.001	0.0005	0.0003	

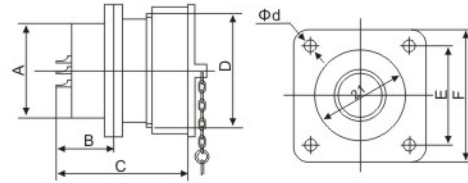
注: 连接器根据接触对数量, 其每一接触的额定电流按下表规定的下降率计算。  
 Remarks: according to quantity of connectors, rated current of the connectors descends as follow

接触对数量 Contact number	1-3	4-10	11-10	21-30	31-40	41-50	50以上
下降率 Rate of decline	0	10	20	30	40	50	60

振动: 加速度达100m/S<sup>2</sup> Quiver: acceleration reaches 100m/S<sup>2</sup>  
 冲击: 加速度达250m/S<sup>2</sup> Impact: acceleration reaches 250m/S<sup>2</sup>  
 寿命: 500次 The number of unplugged :500 times

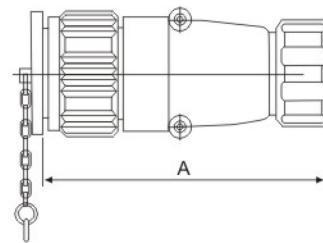


● 插座 Socket



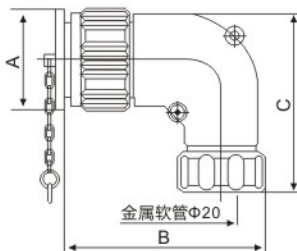
YD	20	28	32	40	48	55
A	20.4	28	32	40	48	55
B	16	16	18	18	23	16
C	38	38	40	40	45	38
D	M25×2	M33×2	方牙38×3	方牙46×3	方牙55×3	方牙62×3
Φd	4-3.5	4-3.5	4-3.5	4-4.5	4-4.5	4-4.5
E	22±0.2	30±0.2	32±0.2	40±0.2	48±0.2	53±0.2
F	32	40	42	50	58	64

● 直式金属软管插头 Straight type:metal hose plug



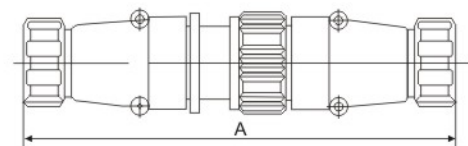
YD	20	28	32	40	48	55
A	75	78	84	90	93	98

● 弯式金属软管插头 Bending type:metal hose plug



YD	20	28	32	40	48	55
A	32	42	45	55	65	70
B	64	71	76	85	92	97
C	60	80	88	95	103	110

● 直式对接电缆式 Straight type:butt joint cable type



YD	20	28	32	40	48	55
A	145	148	157	180	185	185

焊接芯件参数 Solder contact spec

公端绝缘体正面图  
Male contact face view



YD20	3	4	5	7
额定电流A Rated current(A)	25A	25A	10A	10A
接触件直径 Contact diameter	Φ2.5×3	Φ2.5×4	Φ1.5×5	Φ1.5×7
工作电压(AC.V) Working voltage	500V	500V	500V	500V
耐压(AC.V) Withstand voltage	1500V	1500V	1500V	1500V
接触电阻MΩ Contact resistance	<1	<1	<3	<3
绝缘电阻MΩ Insulation resistance	>500	>500	>500	>500

公端绝缘体正面图  
Male contact face view



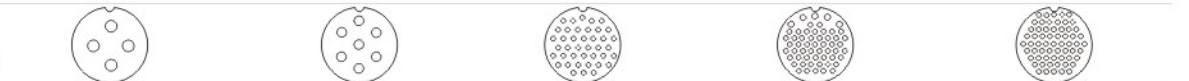
YD32	4	10	13	19
额定电流A Rated current(A)	50A	10A*5 25A*5	10A*9 25A*4	10A
接触件直径 Contact diameter	Φ3.5×4	Φ1.5×5 Φ2.5×5	Φ1.5×9 Φ2.5×4	Φ1.5×19
工作电压(AC.V) Working voltage	500V	500V	500V	500V
耐压(AC.V) Withstand voltage	1500V	1500V	1500V	1500V
接触电阻MΩ Contact resistance	<1	<3	<3	<3
绝缘电阻MΩ Insulation resistance	>500	>500	>500	>500

公端绝缘体正面图  
Male contact face view



YD48	5	7	27	38	42
额定电流A Rated current(A)	100A	50A	10A*26/25A*1	10A*33/25A*5	10A
接触件直径 Contact diameter	Φ5.5×5	Φ3.5×5	Φ1.5×26/Φ2.5×1	Φ1.5×33/Φ2.5×5	Φ1.5×42
工作电压(AC.V) Working voltage	500V	500V	500V	500V	500V
耐压(AC.V) Withstand voltage	1500V	1500V	1500V	1500V	1500V
接触电阻MΩ Contact resistance	<0.5	<1	<3	<3	<3
绝缘电阻MΩ Insulation resistance	>500	>500	>500	>500	>500

公端绝缘体正面图  
Male contact face view



YD55	4	7	40	53	61
额定电流A Rated current(A)	50A	50A*1/100A*6	10A*25/25A*15	10A*48	10A
接触件直径 Contact diameter	Φ3.5×1 Φ10×3	Φ3.5×1 Φ10×6	Φ1.5×25 Φ2.5×15	Φ1.5×48 Φ2.5×5	Φ1.5×61
工作电压(AC.V) Working voltage	500V	500V	500V	500V	500V
耐压(AC.V) Withstand voltage	1500V	1500V	1500V	1500V	1500V
接触电阻MΩ Contact resistance	0.0005/0.0005	0.0005/0.0001	0.0025/0.001	0.0025/0.001	0.0025
绝缘电阻MΩ Insulation resistance	>500	>500	>500	>500	>500